

Customer \_\_\_\_\_

PO # \_\_\_\_\_

Date \_\_\_\_\_

Job Name \_\_\_\_\_

Ship to Address \_\_\_\_\_

**Truck and Trailers Serviced :**

Width : \_\_\_\_\_Max\_\_\_\_\_Min      Height : \_\_\_\_\_Max\_\_\_\_\_Min      Yard Jockeys :    Yes    No

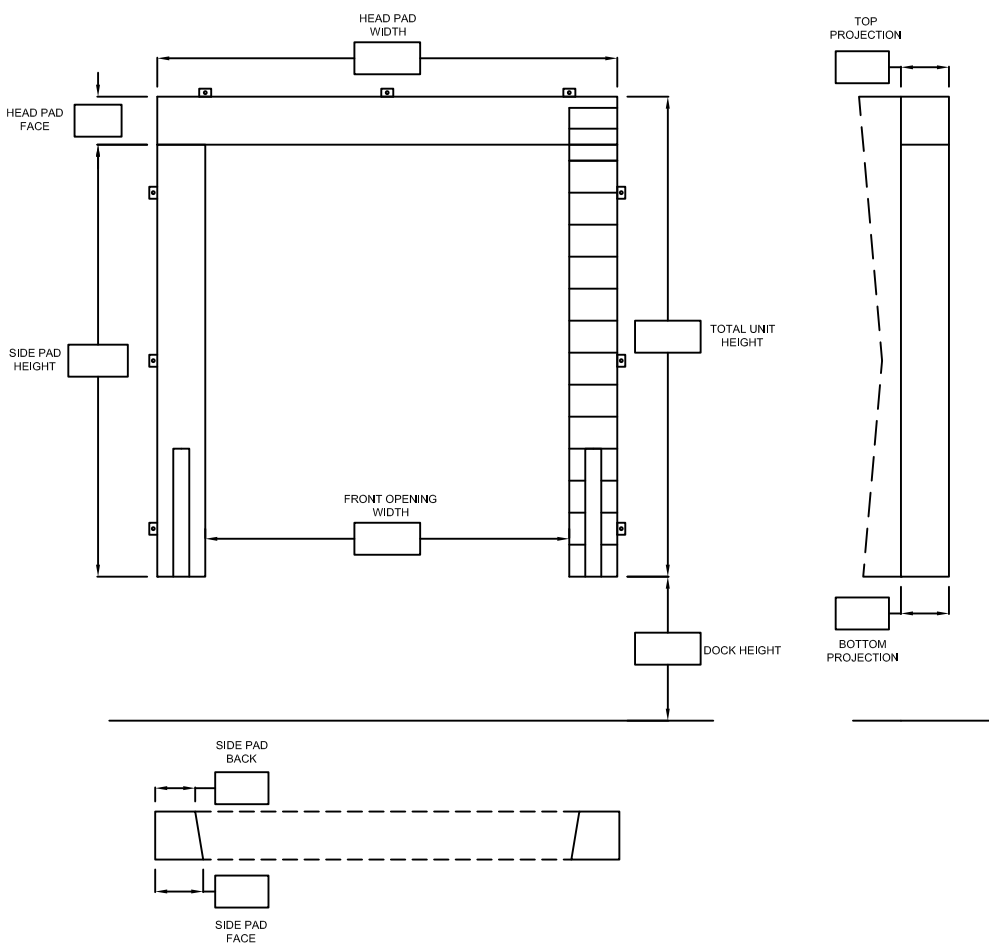
**Door Information :**

Door Opening : \_\_\_\_\_' \_\_\_\_\_" W x \_\_\_\_\_' \_\_\_\_\_" H      Building Projection \_\_\_\_\_"      Bumper Projection \_\_\_\_\_"

Approach :    Level    Incline    Decline

\_\_\_\_\_Dock Height at Building\_\_\_\_\_Height at 50' \_\_\_\_\_%Grade

QTY



Base Material :    22 oz Vinyl    40 oz Vinyl    50oz Vinyl

Color :    Black    Other : \_\_\_\_\_

Wear Pleats :    None    4"    6"    8"  
Head and Side Pads    Head Pad Corners Only

Material :    22 oz Vinyl    40 oz Vinyl    50oz Vinyl

Color :    Black    Other : \_\_\_\_\_

Drop Curtain :    None    12"    18"    24"

Guide Stripe :    32"    Full Length

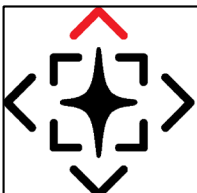
Notes :

Approved By :

\_\_\_\_\_

Date :

\_\_\_\_\_



**NORTH STAR**  
LOADING DOCK EQUIPMENT

Product Specification  
Foam Head Pad Dock Seal